

Primary Characteristics

I_F	2.0	A
V_{RRM}	50~1000	V
I_{FSM}	50	A
V_F	1.0~1.7	V

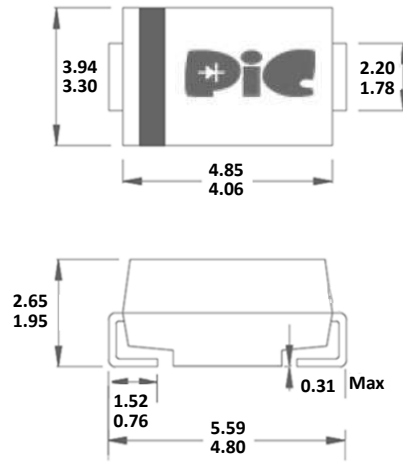
Features

- The plastic package carries Underwriters Laboratory Flammability Classification 94V-0
- For surface mounted applications
- Ultra fast switching for high efficiency
- Low reverse leakage
- Built-in strain relief, ideal for automated placement
- High forward surge current capability
- High temperature soldering guaranteed: 260°C /10 seconds at terminals

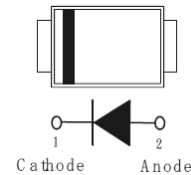
Mechanical Data

- Case: JEDEC SMB molded plastic body
- Terminals: Solder plated, solderable per MIL-STD-750, Method 2026
- Polarity: Color band denotes cathode end
- Weight: Approx. 0.0035 ounce, 0.098 grams

SMB



Dimensions in inches and millimeters



Maximum Ratings & Electrical Characteristic

Rating at 25°C ambient temperature unless otherwise specified. Single phase half wave 60Hz, resistive or inductive load. For capacitive load current derate by 20%.

Parameter	Symbol	US2AB	US2BB	US2DB	US2GB	US2JB	US2KB	US2MB	UNITS
Marking Code	-	US2AB	US2BB	US2DB	US2GB	US2JB	US2KB	US2MB	-
Recurrent Peak Reverse Voltage	V_{RRM}	50	100	200	400	600	800	1000	Volts
RMS Voltage	V_{RMS}	35	70	140	280	420	560	700	Volts
DC Blocking Voltage	V_R	50	100	200	400	600	800	1000	Volts
Average Forward Rectified Current at TL=55°C	$I_{F(AV)}$	2.0							Amps
Peak Forward Surge Current: 8.3ms single half sine-wave superimposed on rated load (JEDEC Method)	I_{FSM}	50.0							Amps
Forward Voltage at 2.0A	V_F	1		1.4		1.7		Volts	
DC Reverse Current at Rated DC Blocking Voltage $T_J=25^\circ\text{C}$	I_R	5							μA
Typical Thermal Resistance (NOTE 1)	$R_{\theta JA}$	50							$^\circ\text{C}/\text{W}$
Reverse recovery time (NOTE 2)	T_{rr}	50				75			ns
Operating junction and storage temperature range	T_J, T_{STG}	-55~+150							$^\circ\text{C}$

Notes:

- (1) P.C.B. mounted with 0.2x0.2" (5.0x5.0mm) copper pad areas
- (2) Reverse recovery condition $I_F=0.5\text{A}, I_R=1.0\text{A}, I_{rr}=0.25\text{A}$

Rating and Characteristics Curves

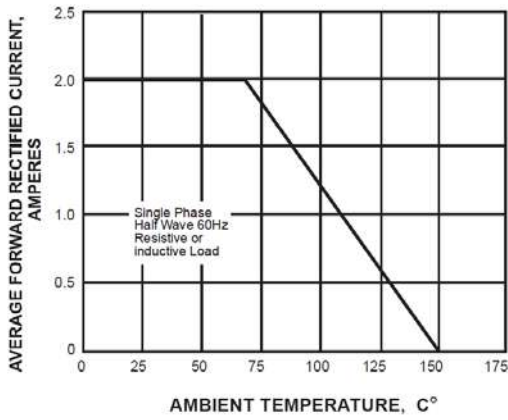


Fig. 1 Forward Current Derating Curve

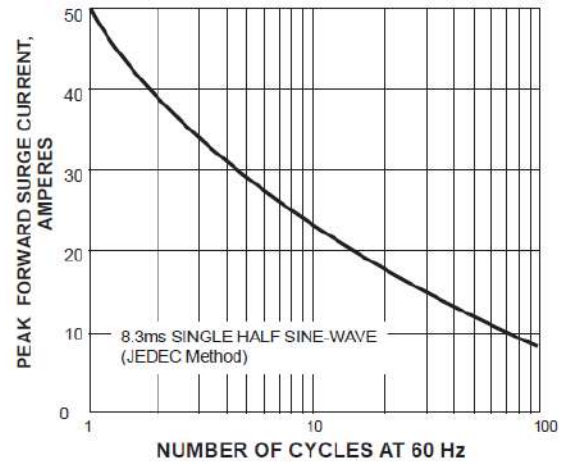


Fig. 2 Max Non-Repetitive Peak Forward Surge Current

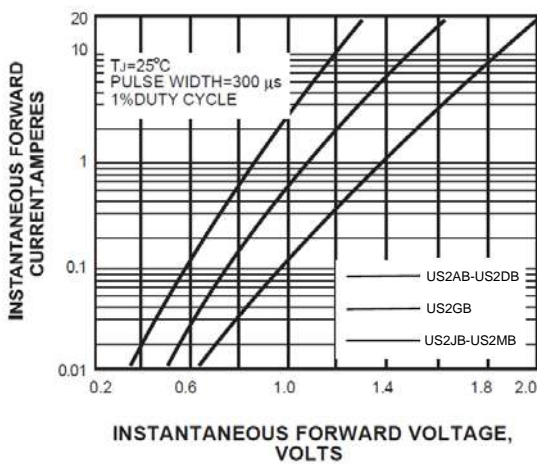


Fig. 3 Typical Instantaneous Forward Characteristics

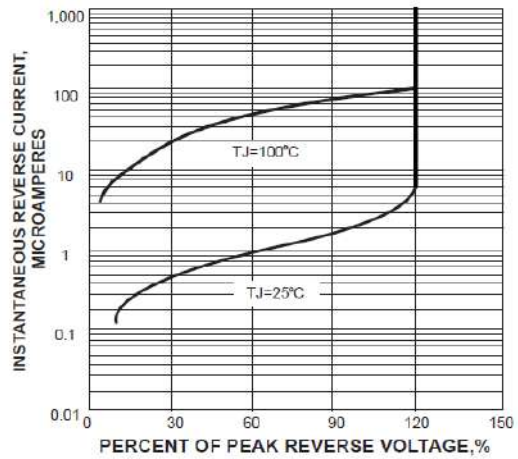
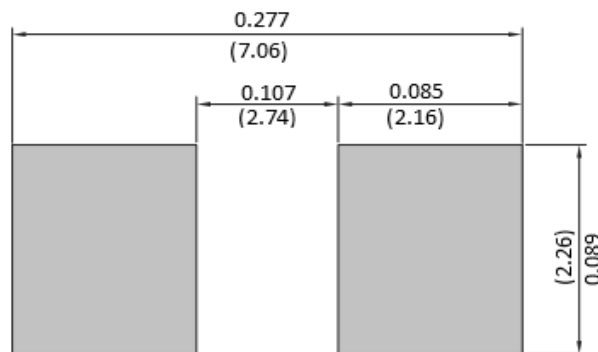


Fig. 4 Typical Reverse Characteristics

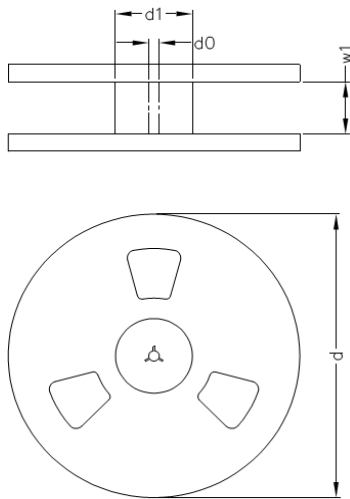
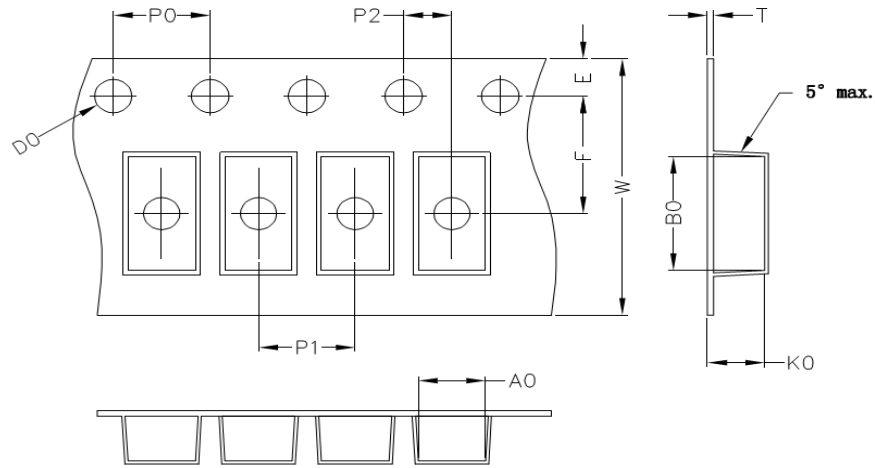
Suggested Pad Layout



Unit: inch (mm)

Packaging Specifications

Package	A0 (mm)	B0 (mm)	K0 (mm)	D0 (mm)	E (mm)	F (mm)	P0 (mm)	P1 (mm)	P2 (mm)	T (mm)	W (mm)
SMA	2.8±0.1	5.33±0.1	2.36±0.1	1.55±0.1	1.75±0.1	5.50±0.1	4.0±0.1	4.0±0.01	2±0.1	0.25±0.1	9.4±0.1
SMB	3.8±0.1	5.40±0.1	2.45±0.1	1.55±0.1	1.75±0.1	5.50±0.1	4.0±0.1	8.0±0.01	2±0.1	0.25±0.1	9.4±0.1
SMC	6.05±0.1	8.31±0.1	2.54±0.1	1.55±0.1	1.75±0.1	7.50±0.1	4.0±0.1	8.0±0.05	2±0.1	0.25±0.1	12±0.1



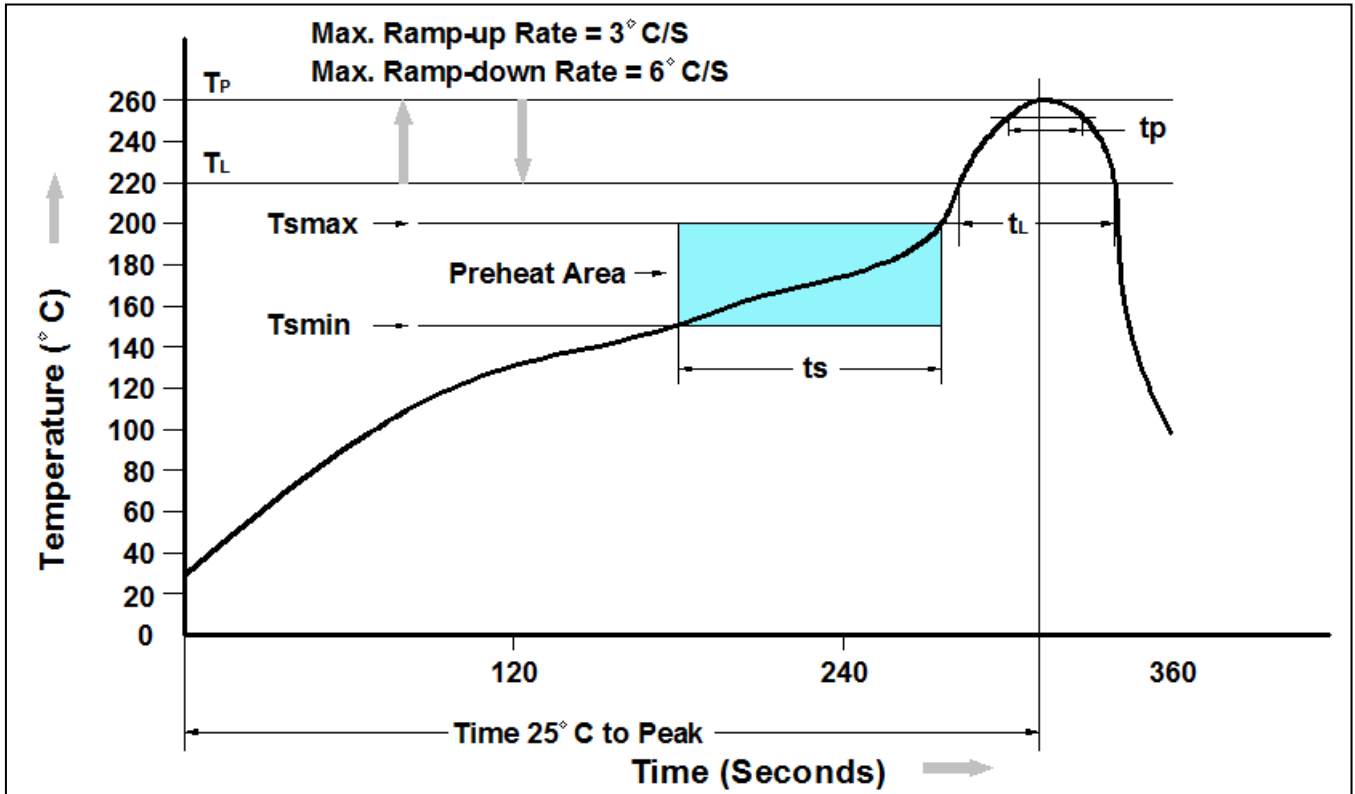
Package	D1 (mm)	D0 (mm)	W1 (mm)	D (mm)
SMA	75	13.5	13.5	330
SMB	75	13.5	13.5	330
SMC	75	13.5	17.0	330

NOTE : The tolerance of reel is ±2mm

Ordering Information

Part Number	Description	Quantity
US2AB~US2MB	SMB Reel	3000 pcs

Recommend IR Reflow Soldering Thermal Profile



Profile Feature	Pb-Free Assembly Profile
Temperature Min. (T Amin)	150°C
Temperature Max. (Tsmax)	200°C
Time (ts) from (T Amin to Tsmax)	60-120 seconds
Average Ramp-up Rate (tL to tP)	3°C/second max.
Liquidous Temperature (TL)	217°C
Time (tL) Maintained Above (TL)	60 – 150 seconds
Peak Temperature	260°C +0°C / -5°C
Time (tP) within 5°C of actual Peak Temperature	30 seconds
Ramp-down Rate (TP to TL)	6°C/second max
Time 25°C to Peak Temperature	8 minutes max.

DISCLAIMER

- The information in this document and any product described herein are subject to change without notice and should not be construed as a commitment by Paceleader, Paceleader reserve the right to make changes to the information in this document.
- Though Paceleader make effort to improve product quality and reliability, Product can malfunction and fail due to their inherent electrical sensitivity and vulnerability to physical stress, it is the responsibility of the customer, when utilizing Paceleader products, to comply with the standards of safety in making a safe design for entire system and to avoid situation in which a malfunction or failure., In developing a new designs, customer should ensure that the device which shown in this documents are used within specified operating ranges.
- The information contained herein is presented only as a guide for the applications of our products. No responsibility is assumed by Paceleader for any infringements of patents or other rights of the third parties which may result from its use.